



ALTRONIC RESEARCH, INC.

P.O. BOX 249, YELLVILLE, ARKANSAS, U.S.A. 72687-0249

PHONE 870-449-4093 FAX 870-449-6000

1-800-482-LOAD (5623) in US

altronic.com

**LIQUID-COOLED
COAXIAL LOAD RESISTOR
MODEL 157250**

TABLE OF CONTENTS

| | |
|---------------------------------|----|
| INTRODUCTION | 1 |
| PRECAUTIONS..... | 2 |
| GENERAL DESCRIPTION | 4 |
| ELECTRICAL CHARACTERISTICS..... | 5 |
| COOLANT | 8 |
| COOLING SYSTEMS..... | 12 |
| INSTALLATION..... | 16 |
| OPERATION | 17 |
| CALORIMETRY | 18 |
| SPECIFICATIONS..... | 21 |
| MAINTENANCE..... | 23 |
| WARRANTY | 26 |

ILLUSTRATIONS, TABLES AND GRAPHS

| | | |
|---------|--|----|
| Fig. 1 | The OMEGALINE Coaxial Load Resistor..... | 4 |
| Fig. 2 | Applied Power & Coolant Flow vs. Coolant Temperature Rise..... | 6 |
| Fig. 2A | Power Input & Coolant Flow vs. Coolant Temperature Rise..... | 7 |
| Fig. 3 | Freezing and Boiling Points of Glycol-Water Mixtures..... | 9 |
| Fig. 3A | Glycol Concentration Table | 10 |
| Fig. 4 | Minimum Water Flow Rate Requirements | 10 |
| Fig. 5 | Internal Pressure Drop vs. Flow Rate | 11 |
| Fig. 6 | Alternative Cooling Systems..... | 12 |
| Fig. 7 | Coolant Volume vs. Operating Time | 14 |
| Fig. 8 | Tank Sizes..... | 15 |
| Fig. 9 | The Calorimetry Set-up..... | 18 |
| Fig. 10 | Kt for Ethylene Glycol Mixtures vs. Temperature..... | 19 |
| Fig. 11 | Density of Ethylene Glycol Mixtures vs. Temperature..... | 20 |
| Fig. 12 | Flow-Meter Correction Factor..... | 20 |
| Fig. 13 | VSWR Nomograph | 22 |
| Fig. 14 | Model 157250 Exploded View/Parts List..... | 24 |

INTRODUCTION

This manual gives you specific information on the installation, operation and service of OMEGALINE coaxial resistors. Most of the loads are field serviceable, but we recommend their return to us for repair. Mistakes can be costly compared to the low cost for our trained personnel to make the repairs and return the load to new performance specifications. Labor and packaging costs are minimal. We take the load completely apart, clean and inspect all parts, repair/replace as necessary, reassemble, water pressure test, power test, VSWR test and package the load for shipment. If new parts are required in the load (such as resistors etc.), this will be an additional cost. The average turn-around time on repairs is approximately 7 working days and generally will depend on your needs. When sending in repairs, please include: your company name and address, the operating frequency you use, fax number, telephone number and your name in case we need to talk to you about the load or obtain shipping instructions. We can accommodate most shipping modes.

SHIP TO: Altronic Research Inc., Hwy. 14 South, Yellville, AR 72687. Our mailing address is P.O. Box 249.

Note: We also repair dummy loads manufactured by many other companies.

Call for information (870-449-4093).

PRECAUTIONS

!!!DANGER!!!

THIS UNIT MUST BE TOTALLY DISCONNECTED FROM ALL RF POWER BEFORE ANY REPAIRS ARE ATTEMPTED. ANY ATTEMPT AT REPAIR WITHOUT DISCONNECTING THE POWER COULD RESULT IN *FATAL ELECTRICAL SHOCK!!!*

WARNING

DO NOT APPLY POWER WITHOUT THE MINIMUM RATED FLOW OF COOLANT THROUGH THE LOAD. A SAFETY INTERLOCK SWITCH IS RECOMMENDED. EVEN A BRIEF APPLICATION OF POWER TO THE LOAD WITHOUT THE CIRCULATION OF COOLANT WILL CAUSE IMMEDIATE BURN OUT.

WARNING

THE LOAD RESISTOR CONSISTS OF A CERAMIC SUBSTRATE COATED WITH A SPECIAL RESISTIVE FILM. IF ANY DAMAGE OCCURS TO THE RESISTOR, THERE COULD BE SHARDS OR SHARP BROKEN PIECES OF CERAMIC IN THE LOAD. CARE SHOULD BE TAKEN TO AVOID CUTS OR INJURIES.

PRECAUTIONS

CAUTION

USE ONLY CLEAR, COLORLESS, ANALYTIC OR TECHNICAL GRADE ETHYLENE GLYCOL WITH PURE TAP OR POTABLE* WATER AS A SOURCE COOLANT. DO NOT USE ANY STOP LEAK, SEALANTS, AUTOMOTIVE ANTIFREEZE OR UNION CARBIDE UCARTHERM™ IN COOLANT. USE OF THESE SUBSTANCES WILL VOID THE WARRANTY.

IMPORTANT

ADDITION OF ETHYLENE GLYCOL TO THE WATER REDUCES THE HEAT CAPACITY OF THE COOLING SYSTEM. COOLANT FLOW RATE MUST BE INCREASED BY AT LEAST 20% OVER MINIMUM FLOW.

CAUTION

DO NOT APPLY MORE THAN THE MAXIMUM RATED RF POWER TO THE LOAD. THIS WILL CAUSE INTERNAL DAMAGE TO THE LOAD.

- * **Potable Water:** The U.S. Health Department has established standards for potable water at a maximum of 500ppm of dissolved solids. Hard water (particularly dissolved salts) can cause damage to resistive film and load. Water condition can be adjusted by mixing distilled water in sufficient quantities with coolant water.

GENERAL DESCRIPTION

The OMEGALINE dummy load is basically a termination-type unit having its characteristic impedance at the input end and tapered to zero impedance (short circuit) at the other end. The center conductor is a tubular resistor whose DC resistance is equal to the characteristic impedance of the line. This load has no outer conductor as such. The cabinet it is mounted in is used as the outer conductor. The RF dielectric medium consists of three distinct materials: the liquid coolant, the plastic water jacket and the air space.

Coolant enters the load at the electrically shorted end, flows axially down the center of the resistor tube, mushrooms over into the annular channel under the water jacket, and makes a second pass over the resistor in direct physical contact with the resistive film. Thus the coolant makes intimate contact with both the inside and outside cylindrical surfaces of the resistor, providing optimum heat transfer with minimal flow rate.

The dummy load housing is essentially an RF connector and a water housing cap assembly which are held together by tie rods constructed of fiberglass pultrusions. The tie rods maintain the water seal and provide mechanical stability for the load. There are two intermediate polycarbonate rings which stabilize the water jacket and maintain its alignment with the resistor. The power dissipating resistor consists of a conductive resistive film which is deposited on a tubular ceramic substrate with silver bands fired on the ends for electrical connection. Contact to the resistor is made by silver plated spring fingers. Coolant flows through the fingers and passes directly over the resistive film. The resistor is enclosed within a plastic water jacket which is custom machined to match the body and seal the coolant flow.

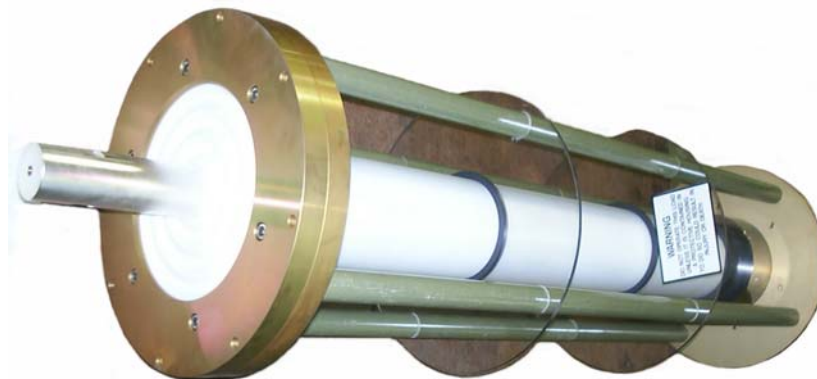


Fig. 1 - The OMEGALINE Coaxial Load Resistor

ELECTRICAL CHARACTERISTICS

POWER RATING - All models of the OMEGALINE series of coaxial loads are rated for continuous duty and may be operated in the specified position at any power level within their rating and with the proper water flow rate. A 10-20% GREATER FLOW RATE MAY BE USED AND IS RECOMMENDED. If the units are operated below the maximum power rating, a corresponding reduction in the coolant flow rate may be used. (See Fig. 4)

All loads are electrically tested prior to shipment. Testing is done at 60 Hz with input voltage and current measured on RMS meters. The (RMS) power being dissipated in the load is simultaneously checked by calorimetry. The relationship used for calculating the power dissipated in the load from the calorimetric data is:

(See Fig. 2 & 2A)

$$P = 0.264 (T_2 - T_1)Q$$

Where P = Power in load in kilowatts

T₂ = Outlet water temperature °C

T₁ = Inlet water temperature °C

Q = Water flow in gallons-per-minute

WARNING!

Power should never be applied before turning on the WATER FIRST and allowing sufficient time (approx. 1 minute) for complete wetting of the resistor and elimination of air bubbles. Water flow must be maintained throughout the application of power and may be turned off within 15-30 seconds after the power has been turned off. Failure to observe these precautions will result in instant failure of the resistor and possible destruction of other parts of the load.

FREQUENCY RANGE - Not defined. The Model 157250SB is designed for 60 Hz to 1.8 MHz applications. Users are responsible for the specific application.

IMPEDANCE - The impedance of the Model 157250SB is determined by customer requirements at the time of order.

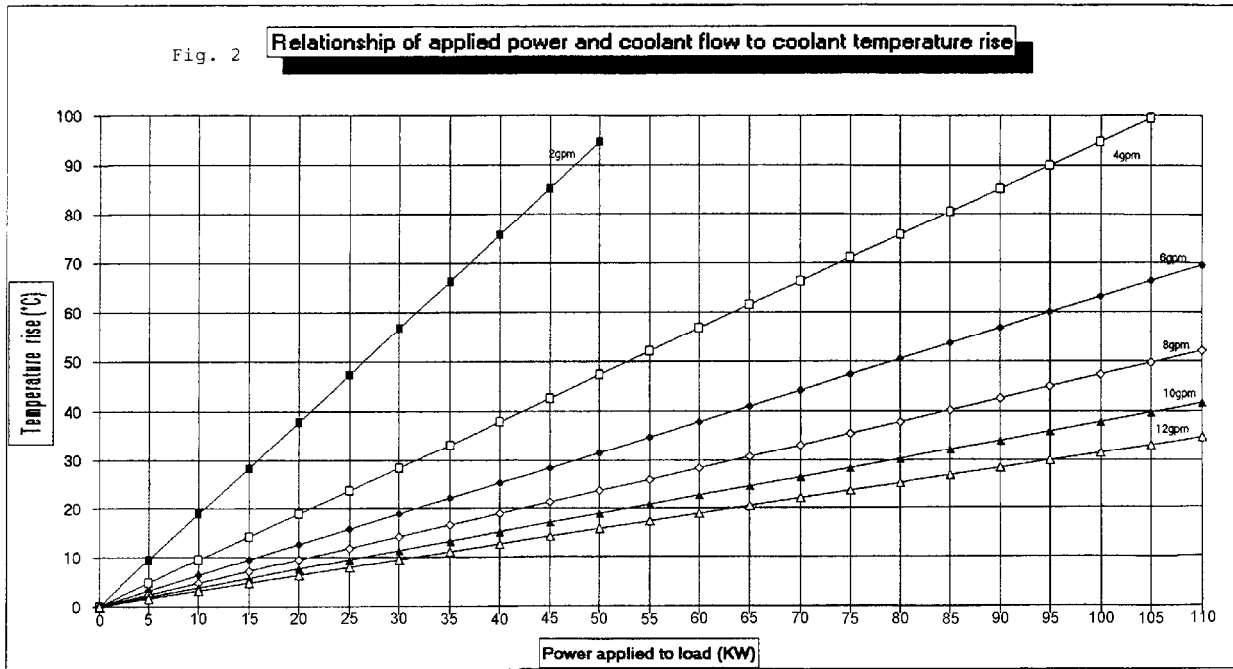


Fig. 2 - Applied Power & Coolant Flow vs. Coolant Temperature Rise

Fig. 2A

Relationship of power input and coolant flow to coolant temperature rise

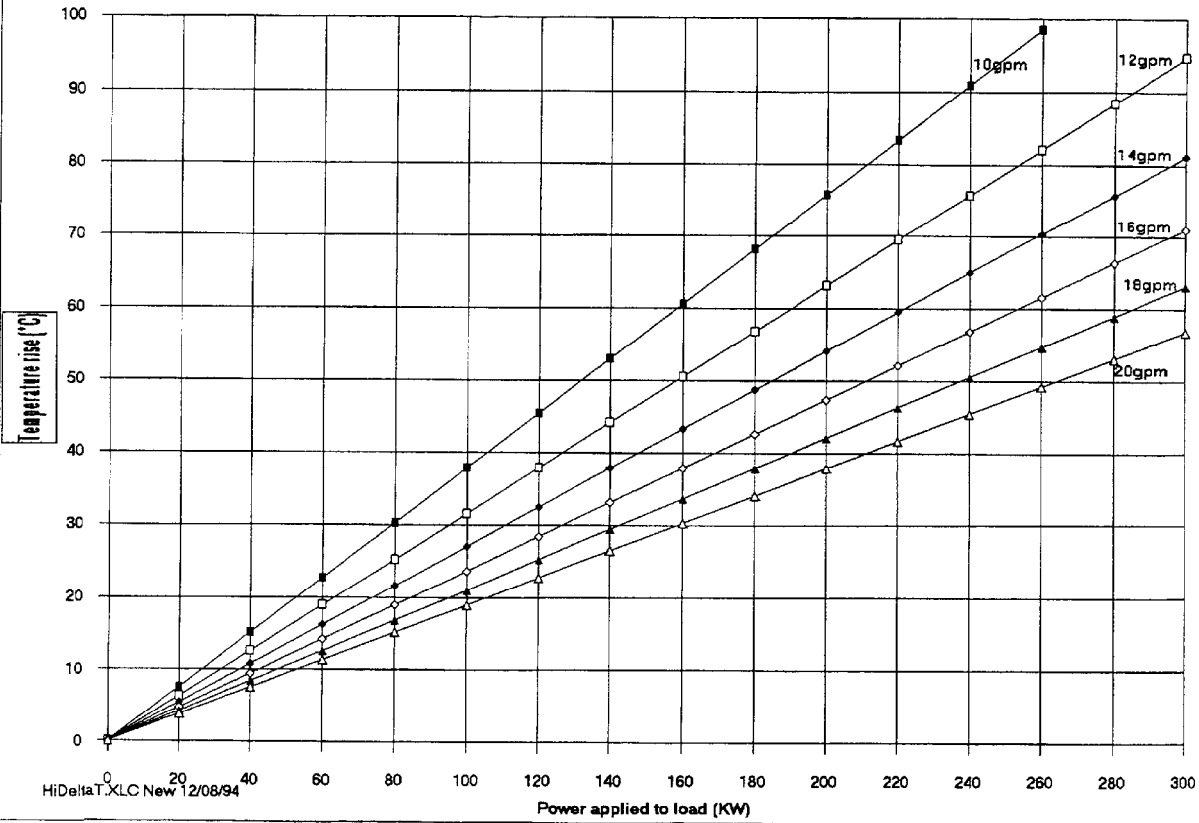


Fig. 2A - Power Input & Coolant Flow vs. Coolant Temperature Rise

COOLANT

COOLANT - The OMEGALINE dummy load may be used with ordinary tap water, pure, or de-ionized water in open or closed cooling systems. The use of deionized and distilled water in OMEGALINE loads has been reported to cause premature failures under some conditions. These failures are the result of the leaching action of the coolant on the silver and silver-plated surfaces of the resistors and contact material. The reported failures have generally been associated with deionized systems which are polished to 10-15 megohm levels or systems operated intermittently. We suspect that the failure mechanism is attributable to bacterial growth in the coolant system and the subsequent high levels of sulfides usually found in conjunction with such contamination.

Altronic does offer a line of water-cooled loads with gold-plated resistors and contacts, for use in systems where leaching action such as above seems unavoidable. Contact our sales office for information.

We suggest the use of caution when determining what coolant to use. Potable water is certainly the most desirable coolant. Brackish or salt water is NOT permissible as a coolant for the load resistor! The load is designed with non-contaminating elements in the water circuit and may be used with transmitters that have pure water recirculating cooling systems. For operation below the freezing temperatures of water, ethylene glycol may be added to the water to prohibit freezing (see Fig. 3). If you have questions about coolants, please consult the factory.

IMPORTANT

We recommend a Glycol mixture of 40% (2:3) or less. Addition of ethylene glycol to water reduces the heat capacity of the mixture with a corresponding reduction in cooling effectiveness. Therefore, the coolant flow rate should be increased approximately 20% from that required with water only.

!!!WARNING!!!

Only clear, colorless analytic or technical grade ethylene glycol may be used. Dow Chemical Company's Dowtherm® SR1 has been reported to be fully compatible with OMEGALINE loads when used in accordance with Dow's instructions (up to a 40% max). **DO NOT use any stop leak, sealants, automotive antifreeze or Union Carbide Ucartherm™ in coolant. To do so will void the warranty.** Damage to the resistor film may occur with applied power, resulting in failure!

| CONCENTRATION OF COOLANT | FREEZING POINT | BOILING POINT |
|--------------------------|----------------|---------------|
|--------------------------|----------------|---------------|

| Glycol: Water Parts by Volume at Room Temp. | % Glycol by Volume | % Glycol by Weight | °C | °F | °C | °F |
|---|--------------------------|--------------------------|-----|-----|-----|-----|
| (pure water) | 0 | 0 | 0 | 32 | 100 | 212 |
| 3:7 | 30 | 32.3 | -16 | 2 | 104 | 219 |
| 2:3 | 40 | 42.7 | -26 | -15 | 106 | 222 |
| 1:1 | 50 | 52.7 | -40 | -40 | 109 | 228 |

Fig. 3 Freezing and Boiling Points of Glycol-Water Mixtures

TEMPERATURE RANGE - The impedance of the load is practically independent of glycol-water mixture, water flow rate, and water temperature. A wide range of input water temperatures (0°C to 60°C) may be used as long as the output water temperature is not allowed to exceed 90° C.

DETERMINATION OF GLYCOL CONCENTRATION –

- Obtain a 500 ml sample of the coolant to be tested and place in the hydrometer jar.
- Place the thermometer in the jar and allow the temperature reading to stabilize.
- Read the thermometer and record the reading.
- Place the hydrometer in the jar and allow to settle. Read the hydrometer and record the reading.
- See the table in Fig. 3A to determine the glycol concentration.

| GLYCOL TABLE | | | | |
|--|-----------------------------------|-----------------------------------|-----------------------------------|-----------------------------------|
| This table shows the relationship between the specific gravity of an unknown glycol-based fluid sample and the percent by volume of a corresponding known sample. Use this table to find the approximate value of the concentration of glycol in a coolant sample. | | | | |
| Enter table with temperature, then go horizontally to find figure closest to observed reading of hydrometer, then go up to see the volume % of glycol | Volume % of glycol in sample ≈ 25 | Volume % of glycol in sample ≈ 30 | Volume % of glycol in sample ≈ 40 | Volume % of glycol in sample ≈ 50 |
| Temperature of sample | Hydrometer reading | Hydrometer reading | Hydrometer reading | Hydrometer reading |
| 30 | 1.047 | 1.056 | 1.073 | 1.089 |
| 40 | 1.045 | 1.054 | 1.071 | 1.089 |
| 50 | 1.043 | 1.052 | 1.068 | 1.084 |
| 60 | 1.041 | 1.049 | 1.065 | 1.081 |
| 70 | 1.039 | 1.047 | 1.063 | 1.077 |
| 80 | 1.037 | 1.044 | 1.060 | 1.074 |
| 90 | 1.034 | 1.042 | 1.057 | 1.071 |
| 100 | 1.032 | 1.039 | 1.054 | 1.068 |
| 110 | 1.029 | 1.036 | 1.050 | 1.064 |
| 120 | 1.026 | 1.033 | 1.046 | 1.060 |
| 130 | 1.023 | 1.030 | 1.044 | 1.057 |
| 140 | 1.020 | 1.027 | 1.040 | 1.053 |
| 150 | 1.016 | 1.023 | 1.037 | 1.050 |
| 160 | 1.013 | 1.020 | 1.033 | 1.046 |
| 170 | 1.009 | 1.016 | 1.029 | 1.042 |

Fig. 3A – Glycol Concentration Table

WATER FLOW RATE - The water flow rates specified for the load is given as the least amount of water flow permissible for full power rating. **AT LEAST MINIMUM FLOW OF WATER MUST BE MAINTAINED THROUGHOUT THE APPLICATION OF POWER.** A greater flow rate (approx. 10% higher) should be used and is recommended. When used at lower than rated power, a reduced water flow rate may be used and combinations of power and water flow rates may be determined by using the table of Fig. 4. In all cases, *water must be allowed to flow for about 1 minute before applying power* so that all air bubbles are dispelled from the system.

| MODEL | MINIMUM FLOW RATE (GPM) | MAXIMUM* AVERAGE (RMS) POWER (KW) | GALLONS PER KILOWATT (K _f) |
|--------|-------------------------|-----------------------------------|--|
| 157250 | 40 | 250 | .16 |

Fig. 4 MINIMUM Water Flow Rate Requirements

* Single Frequency CW

To determine the water flow rate requirements at lower power levels, multiply the average input power in kilowatts by the water flow rate coefficient (K_f) from the above table and add 20% for ethylene glycol mixtures.

WATER PRESSURE - The table of Fig. 5 gives the maximum allowable inlet pressure. Continuous operation of the load at full power and up to an outlet water temperature of 90°C is permissible within the maximum operating pressure given in the table.

NOTE: Do not use a shut-off valve on the water output side of the load in systems that have no water expansion pressure relief. Pressure in the outlet line should be as low as possible to minimize internal pressure.

| MODEL | INTERNAL PRESSURE DROP (PSI) | MINIMUM FLOW RATE (GPM) | ORIFICE COEFFICIENT (K_o) | MAXIMUM INLET PRESSURE (PSI) |
|--------|------------------------------|-------------------------|-------------------------------|------------------------------|
| 157250 | 50 | 40 | .03125 | 100 |

Fig. 5 Internal Pressure Drop vs. Flow Rate

To determine the pressure drop at other flow rates, use the orifice coefficient (K_o) from the above table in the following equation:

$$PSI = K_o Q^2$$

Where PSI = Internal pressure drop in lbs./sq.in.

K_o = Orifice coefficient

Q = Coolant flow rate in gallons/minute

COOLING SYSTEMS

TYPES - Four basic cooling systems are summarized in the table of Fig. 6; viz., municipal water, natural water, tank or reservoir, and heat exchanger. No single cooling system is the "best" under all the different circumstances and conditions encountered by the field. Closed loop systems are generally preferable since they afford much greater control over the purity, temperature, pressure, and flow rate of the coolant.

| | | | BASIC COMPONENTS NEEDED | | | | |
|--------|---|---|-------------------------|---------------------------------|-------------------|---------------------|--|
| METHOD | | COOLANT | COOLANT SOURCE | COOLANT LINES & INSTRUMENTATION | PUMP | RESERVOIR | HOURS OF CONTINUOUS OPERATION |
| Open | 1 | Tap Water | Municipal Supply System | ✓ | In low flow areas | Optional | Unlimited |
| | 2 | Natural fresh water | Lake, river, pond, etc. | ✓ | ✓ | Optional | Unlimited |
| Closed | 3 | Tap or distilled water with or without glycol | Storage tank | ✓ | ✓ | 100 to 1500 gallons | Up to 8 hrs.; depends on size of load & tank. See Fig. 7 |
| | 4 | Tap or distilled water with or without glycol | Cooling Tower | ✓ | ✓ | 1 to 5 gallons | Unlimited |
| | 5 | Tap or distilled water with or without glycol | Heat Exchanger | ✓ | ✓ | Optional | Depending on BTU capacity of exchanger |

Fig. 6 Alternative Cooling Systems

TAP-WATER SYSTEM - The most convenient way to cool the load resistor at the lowest initial cost is by tapping into the existing water supply on the premises. Most municipal sources can provide sufficient pressure to obtain a flow rate that will cool even the highest power model.

In the absence of a water flow-meter, a measure of the available flow rate in gallons-per-minute (GPM) may be made with a stop-watch or a watch with a sweep-hand and a gallon container. Connect the dummy load to the water faucet with a short length of hose, and with the faucet full-on, observe the time in seconds required to fill the gallon container at the water outlet of the load.

When using the dummy load with a tap-water system, the flow rate is usually adjusted to 10-15% above the minimum requirement and left unattended. Since water lines ordinarily serve other appliances (flush toilets, etc.) over which there is no control, a flow switch should be installed to protect the load resistor element in case the flow rate drops due to a momentary change in water pressure. Choose a flow switch with a small "ON-OFF" flow rate dead band. The switch will also protect the resistor in cases where the RF power may be turned on before the water flow, or where accidental termination of water flow (pinched hose, debris, valve closing, etc.) may occur. In the tap-water system the heated water is discharged down the drain and therefore, the cost of the water becomes an important consideration.

NATURAL WATER SYSTEM - A close proximity to a natural supply of fresh water may suggest its utilization. Brackish or salt water may NOT be used as a coolant for the load resistor. The natural water system usually requires more extensive piping and heavier pumping equipment to handle attendant pressure drop.

The quality of natural water varies widely and straining is often necessary to handle the twigs, minnows, leaves and other debris frequently encountered. Small automatic self-cleaning strainers are available for this purpose. The strainer should be installed upstream from the pump to protect the pump as well as the load resistor. Additional filtering of smaller particles is sometimes required and this can be accomplished with finer mesh "Y-TYPE" strainers inserted in series with the line.

In this system, the water from the natural source may not be directly usable as a coolant for the load resistor element due to a high contamination, such as silt, iron content, mud, etc.; but it may be used as "dirty" water coolant in a water-to-water heat exchanger. The contaminated water could be piped via plastic tubing or hose to copper coils immersed in a holding tank containing clean water coolant for the dummy load. This arrangement would require a dual pump - one section to pump the "dirty" natural-source water and the other section to pump the clean water coolant through the dummy load.

HEAT EXCHANGER SYSTEM - In this system, an accumulator or receiving tank is used which only holds about one-half the flow rate in gallons-per-minute. Accordingly, a small quantity of coolant is required. The coolant functions solely as a heat transfer agent between the load resistor and the heat sink. A heat exchanger consisting of a radiator and a fan is the type recommended for this application. With ambient air as the ultimate heat sink, the operating temperature of the coolant will always be above the air temperature for heat to be transferred from the load to the air. Some consideration should be given to exhausting the hot air to the outside so as not to have a temperature rise problem in the transmitter area. The heat exchanger may be a complete self-contained unit (portable) which

includes the dummy load or the load may be separate and apart from the heat exchanger unit to facilitate installation and maintenance requirements, etc. Both types of heat exchanger packages are available from us.

TANK OR RESERVOIR SYSTEM - In this system, a practical amount of coolant is stored in a tank or reservoir and continuously recirculated (pumped) through the load until the coolant becomes hot. (NOTE: One kilowatt of power will raise a gallon of water 7°F per minute.) This relationship was used to calculate the curves of Fig. 7. The curves show the permissible hours of continuous operation for a given quantity of water in gallons, i.e., the number of gallons of water that will be raised from room temperature (70°F) to 170°F. If water from a swimming pool is used, care should be taken to filter out foreign debris to avoid clogging the system. The water flow rate as specified for each load (GPM) must be maintained throughout the application of power. A thermal switch and a water flow switch should be used as a protection against over-temperature and low coolant flow.

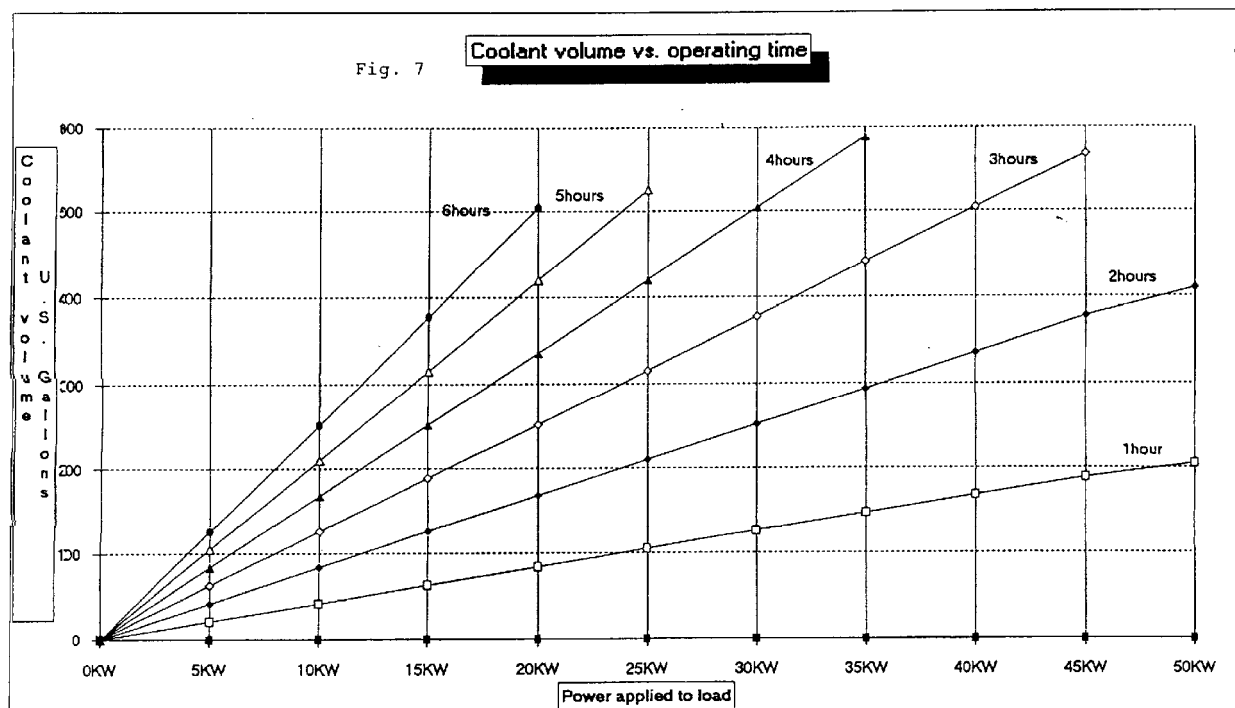


Fig. 7

Storage tanks between 200 and 500 gallons will satisfy most requirements. A waterproof concrete holding tank in the 1000 to 1500 gallon range may also be considered. (Similar to a septic tank and buried below the frost line.) It would be protected from extremes of temperature and could hold ordinary tap water as the coolant, while comparing favorably in cost to smaller metal tanks exposed to the elements. Storage tanks are normally vented to the atmosphere and allowance should be made for determining the liquid level in the tank and for adding make-up water. Some typical sizes of cylindrical tanks in the range of interest are shown in the table of Fig. 8 below.

| CAPACITY IN GALLONS | SIZE DIAMETER x LENGTH IN FEET |
|------------------------------------|---|
| 120 | 2 x 5 |
| 200 | 2.5 x 5.5 |
| 300 | 3 x 6 |
| 500 | 3.5 x 7 |
| 1000 | 5 x 7 |
| 1500 | 5 x 10.5 |

Fig. 8 Tank Sizes

The pump selected for this service should have all wetted parts made from brass, bronze, ceramic or stainless steel. Cast iron and common steel will "poison" the water system and cause early failure of the load. Select the pump to overcome piping losses and the internal pressure drop of the load (shown in Fig. 5).

INSTALLATION

The OMEGALINE Model 157250B may be used only in fixed applications. This load must be mounted vertically with the RF stub connector upright. Coolant must be piped to the load to enter the axial part of the load. The coolant fittings on the load are 1½-11½ NPT (input) and 1-11½ (discharge).

Provisions should be made to allow interruption of the transmission line at any position where the transmitter is to be terminated by the load or measurements are contemplated. Coaxial switches may be inserted in the transmission line run to provide rapid load switching.

Proceed as follows:

1. Install the unit in the selected location.
2. Connect the outlet water fitting of the dummy load to a convenient drainage.
3. Connect the water inlet to a water source capable of delivering the required flow in gallons per minute.

If the required source of water flow is not available from the local lines, refer to the previous section for a possible alternate cooling system.

We highly recommend the use of a flow switch in the inlet piping to detect low flow conditions which could damage the load. We recommend the IMO DeLaval Model AFS200, Adjustable Flow Switch. This switch has low internal pressure drop and operates reliably in pilot-duty applications. (This switch is available from us.) Mount the switch in a horizontal section of pipe where there is a straight horizontal run of at least five inches on each side of the switch.

4. Connect the microswitch contacts of the flow switch in series with transmitter interlock circuit.
5. Connect the dummy load to the transmission line. The unit is designed to connect to a 50 or 75 ohm line (or as stated on label).

OPERATION

To place the dummy load in operation, the following procedure is recommended:

1. Turn on the water pressure and make certain water is flowing through the load. Allow about 1 minute of water circulation to insure complete wetting of the resistor element in the load and exhaustion of air bubbles.
2. Check the water flow rate. This can be done with a calibrated container and a wrist-watch with a sweep-hand if no water flow meter is available.
3. Apply RF power.

To cease operation, turn the RF power off and allow about 30 seconds before turning off the water.

CALORIMETRY

The OMEGALINE loads may be used in conjunction with a flow meter, thermometer wells and thermometers to accurately measure transmitted power by calorimetry. Fig. 9 shows a complete arrangement. The flow meter and the thermometer wells may be placed at a convenient position and at eye level for ease of reading. There is no need to have them adjacent or in close proximity to the load. The components may be placed upwards of fifty feet away from the load without any loss in the accuracy of measurement.

The thermometer wells (Altronic type TW-2), which are closed to the main coolant stream, use water as the heat transfer medium and operate efficiently with the thermometers immersed in about 1 inch of water. The stabilization time for the system is approximately thirty seconds and a power measurement accuracy within 2% may be obtained with very little difficulty. The curves of Fig. 2 show the temperature rise as a function of power in kilowatts (KW) for various water flow rates in gallons-per-minute (GPM). Technical and component information on the calorimetry set-up may be obtained by contacting ALTRONIC RESEARCH, INC.

If an ethylene-glycol and water mixture is used, a correction must be applied to the flow meter reading due to a change in density and change in specific heat and gravity of the coolant.

Use the curves of Fig. 10 to obtain the new (K_t) multiplying factor for the calorimetric power equation and curves of Fig. 11 to obtain the density value to be used with the curve of Fig. 12 to get the flow meter correction factor. The calorimetric power equation when using ethylene glycol and water mixtures will be as follows:

$$P = K_t (T_1 - T_2) Q \times F$$

Where P = Power in load in kilowatts

T₁ = Outlet water temperature °C

T₂ = Inlet water temperature °C

Q = Water flow in gallons per minute

F = Flow meter correction factor

K_t = Coolant multiplying factor

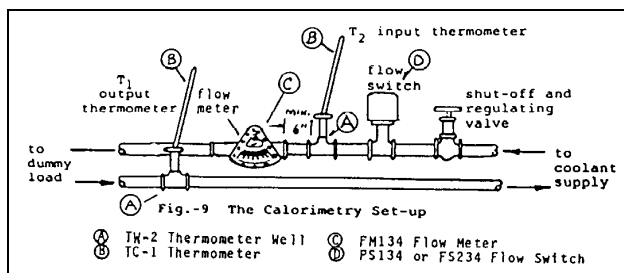


Fig. 9 The Calorimetry Set-up

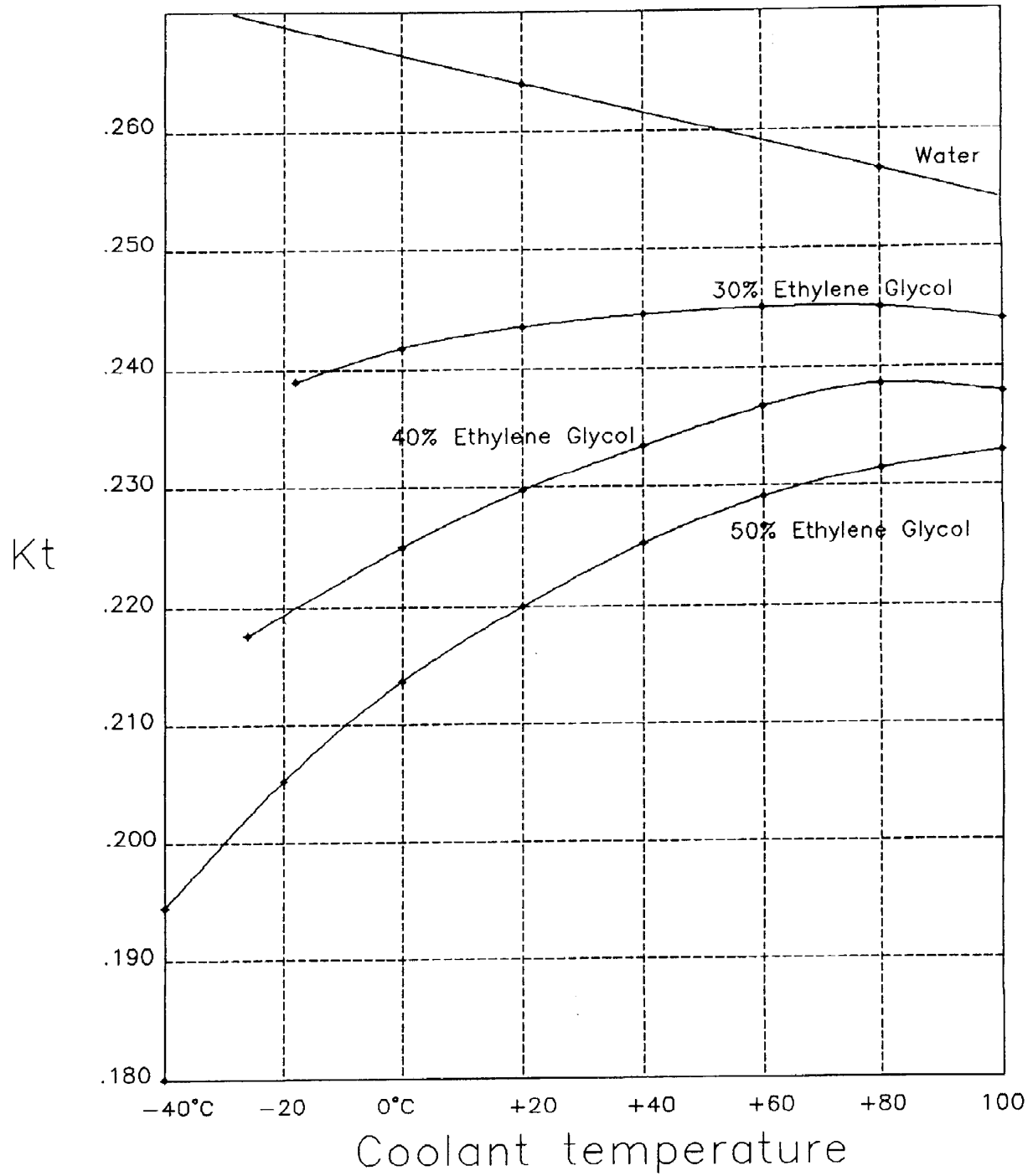


Fig. 10 Kt for Ethylene-Glycol/Water Mixtures vs. Temperature

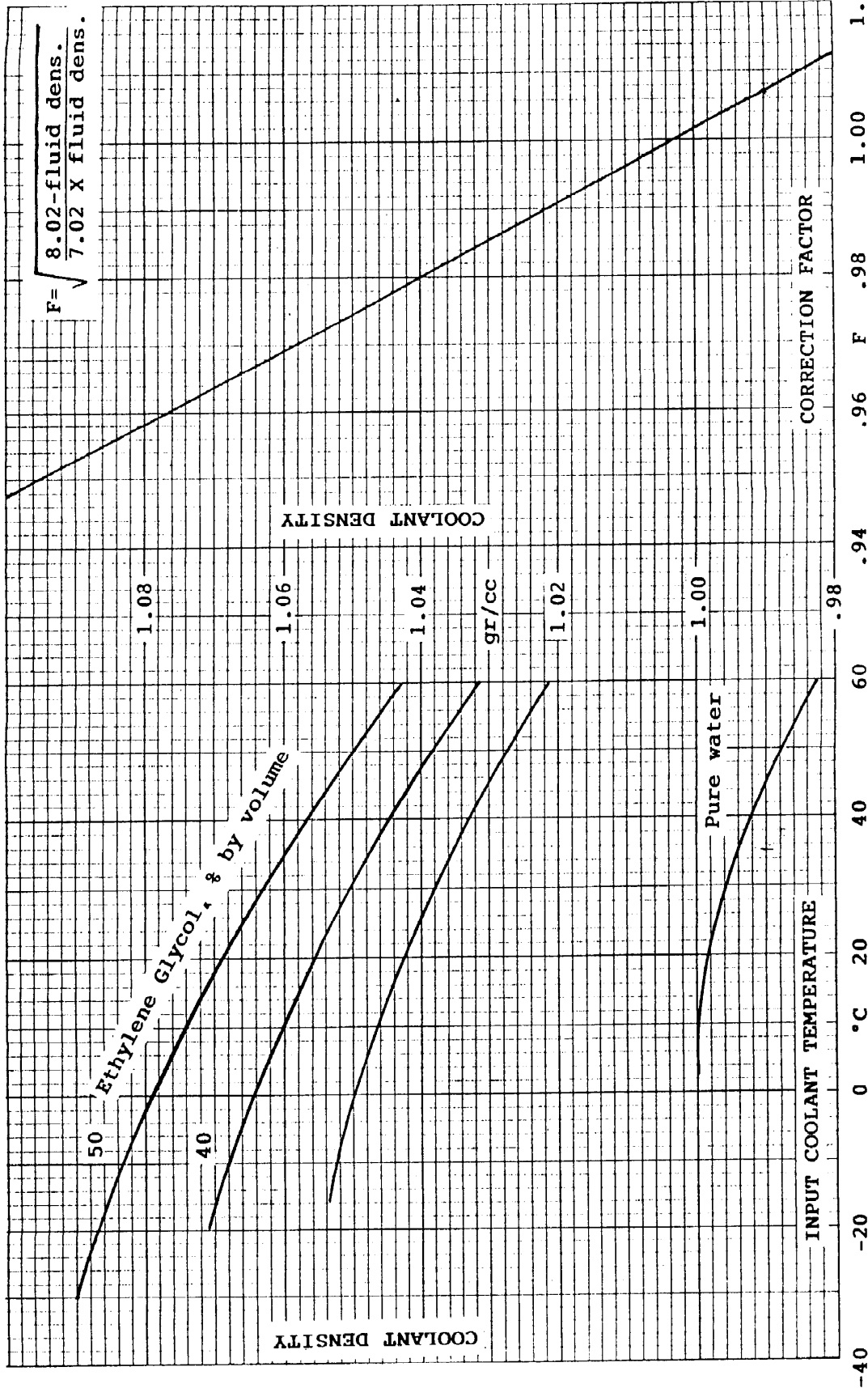


Fig.-11 Density of Ethylene Glycol and Water Mixtures at Various Temperatures

Fig.-12 Flow-Meter Correction Factor

(The above graphs may be used together as a nomograph)

SPECIFICATIONS

Model 157250

| | |
|--|---|
| Impedance | 300 ohm nominal or as ordered |
| Maximum Power Rating | 250 KW |
| Maximum VSWR | 60 Hz to 1750 kHz |
| Coolant <i>(refer to Coolant section of manual prior to operation)</i> | Ordinary tap water, pure water, or technical grade Ethylene Glycol/water mixture no more than 40% recommended. Use of Ethylene Glycol derates the load. |
| Water Connectors | NPT Female 1½-11½ input; 1-11½ discharge |
| Min. Water Flow Rate | 40-GPM |
| Input Water Temperature | 4°C to 45°C |
| Output Water Temperature | Maximum: 90°C |
| Maximum Inlet Pressure | 100 PSI Max. |
| Resistor | Cylindrical film type-field replaceable |
| Input Connectors | Stub |
| Dimensions | 14" OD x 46.375" L |
| Weight | 71 lbs. |
| Operating Position | Vertical - RF Input Up |
| Finish | Nickel Plate |

DC Resistance _____

Serial No. _____

Date _____

VSWR NOMOGRAPH

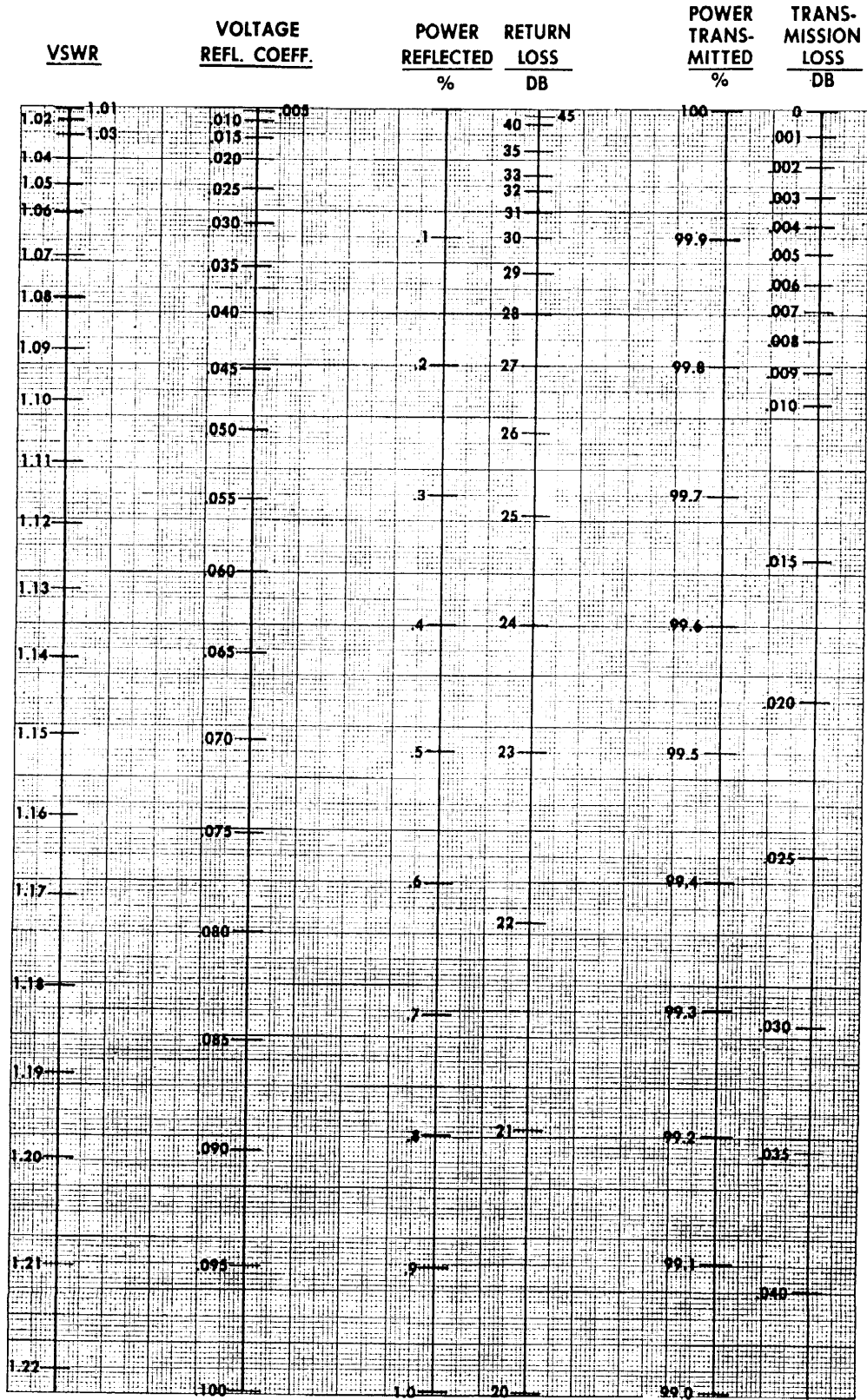


Fig. 13

MAINTENANCE

OMEGALINE Water-cooled loads with power ratings of 100 kW or greater are not considered field-repairable and should be returned to Altronic Research for repairs. In the event of mechanical damage to the unit, operational difficulty, or information concerning a desired unusual application of the load, contact the factory.

NOTE: ANY LEAK FROM THE MAIN BODY OF THE LOAD IS AN INDICATION THAT THE UNIT SHOULD BE RETURNED TO THE FACTORY FOR REPAIRS.

The following checks, tests and procedures may be used periodically, when necessary, or when a malfunction is suspected.

1. **DC Resistance** - The DC resistance of the load may be checked at the RF input connector and a value within 4% of the required resistance is acceptable.
2. **External Filter Screen** - Should be checked regularly to prevent clogging.
3. **VSWR** - The voltage-standing-wave-ratio of the load is the same with "stand still" water as it is with flowing water. To test for VSWR, fill the load with water. When filling with water, many small bubbles will form inside. These must be flushed out with excess water before measuring VSWR. After filling, cork it, connect to a slotted line or directional coupler and measure the VSWR at SIGNAL GENERATOR LEVELS ONLY.

For technical assistance, call 870-449-4093 or fax 870-449-6000.

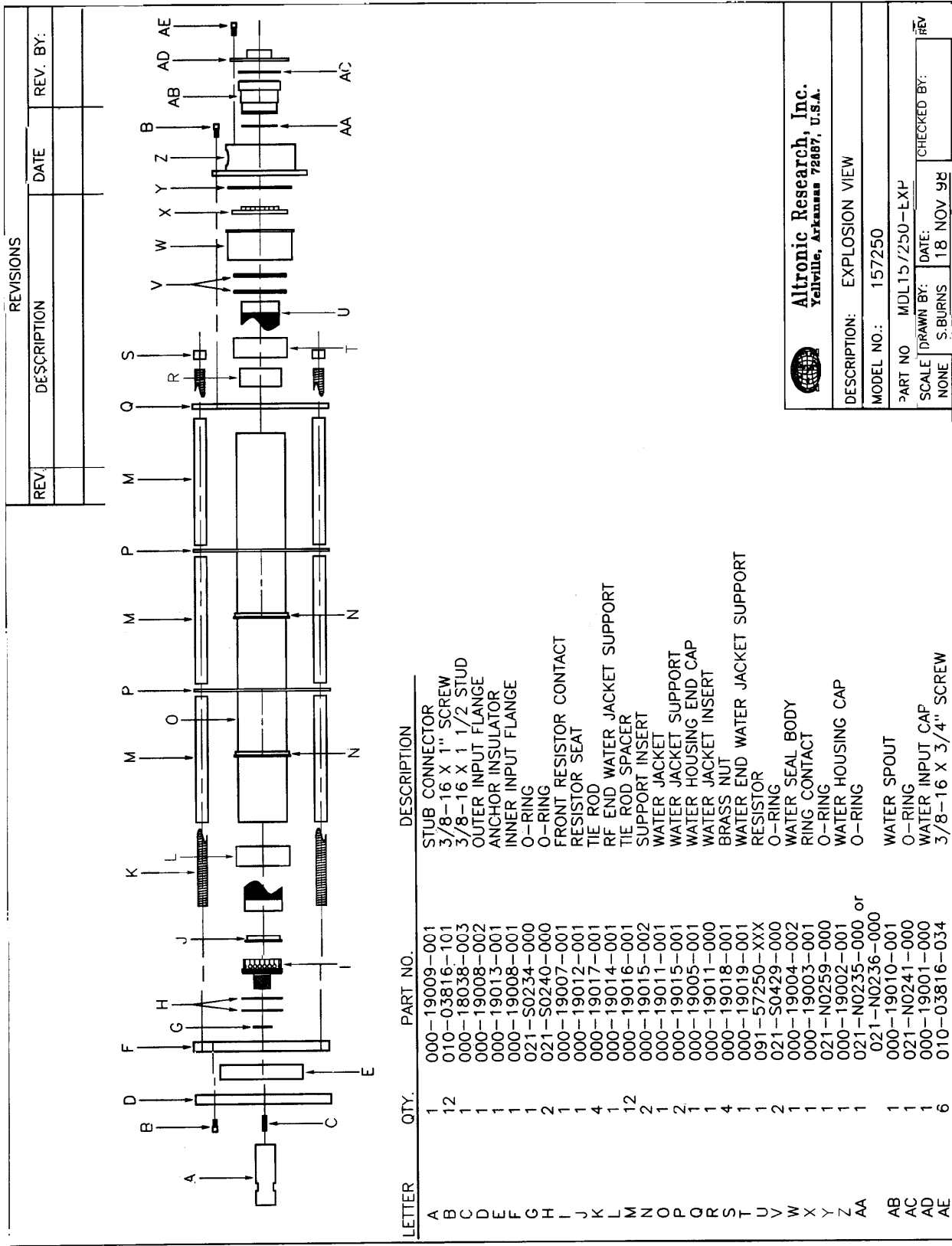



Fig. 14

| REVISIONS | | |
|-----------|-------------|------|
| REV | DESCRIPTION | DATE |
| | | |
| | | |

REV. BY:



Altronic Research, Inc.
Yellville, Arkansas 72687, U.S.A.

| | |
|--------------|--------------------|
| DESCRIPTION: | EXPLOSION VIEW |
| MODEL NO.: | 157250 |
| PART NO | MDL15/250-EXP |
| SCALE | DRAWN BY: DATE: |
| NONE | S. BURNS 18 NOV 98 |
| | CHECKED BY: #REV |

LIMITED WARRANTY

We take pride in manufacturing products of the highest quality and we warrant them to the original purchaser to be free from defects in material and workmanship for the period of one year from date of invoice. Additionally, products of our manufacture repaired by us are warranted against defects in material and workmanship for a period of 90 days from date of invoice, with the provisions described herein.

Should a product, or a portion of a product of our manufacture prove faulty, in material or workmanship, during the life of this warranty, we hereby obligate ourselves, at our own discretion, to repair or replace such portions of the product as required to remedy such defect. If, in our judgment, such repair or replacement fails to be a satisfactory solution, our limit of obligation shall be no more than full refund of the purchase price.

This warranty is limited to products of our own manufacture. Equipment and components originating from other manufacturers are warranted only to the limits of that manufacturer's warranty to us. Furthermore, we shall not be liable for any injury, loss or damage, direct or consequential, arising out of the use, or misuse (by operation above rated capacities, repairs not made by us, or any misapplication) of the equipment. Before using, the user shall determine the suitability of the product for the intended use; and the user assumes all risk and liability whatsoever in connection therewith.

The foregoing is the only warranty of Altronic Research Incorporated and is in lieu of all other warranties expressed or implied.

Warranty returns shall first be authorized by the Customer Service Department and shall be shipped prepaid. **Warranty does not cover freight charges.**